



# Newsletter

Spring Term - March 2024



## A Message from the Head

This week we have seen lots of children out and about in the city. Year 3 had a very successful visit to the Pavilion while year 6 have been out planting trees which have been nurtured on site!

Year 6 had a great time on their residential and for some of our children, this was their first time away from home. They showed amazing resilience throughout despite the weather! Those children who did not attend the residential had fun on their activities week, bowling, baking and more tree planting!

We are so excited about world book week next week. I am looking forward to seeing a school full of book characters on Thursday so get creative over the weekend!

Have a great weekend everyone!

*Mrs. E. Gale*



Dear Queen's Park learning community,

I am writing a friendly reminder that we are a community... and that's our power!

As people who are responsible for young lives, we are a pillar for them to lean on for guidance to navigate the world they are growing up in. Each milestone is a challenge within itself but through perseverance and compassion we proceed. Embracing their humour and individuality and their strengths and their weaknesses. Social forces that produce prejudice, discriminatory language, differential treatment, stereotypes, labels, and so forth, should not be the vocabulary for children to identify with. We fail them when we regurgitate hate towards or around them.

How do we define racism? How do actively manifest racism's demise? Confronting institutionalised racism can be scary if we perceive ourselves to be alone in confronting it. When we talk about racism, we need to talk about the environment that gives it oxygen to thrive. Overtly or covertly are both unacceptable. We cannot promise to see racism fade into history immediately, but what we can do with our school day is to stop it prevailing in our learning community.

We must always remain critical of what we are being exposed to and the way we influence others.

Friendship is important. Racism is a plague in our society that pulls us away from our peers and robs us from the opportunity to learn from each other. Our school policies do not encourage behaviours that actualise racist mentalities either through verbalised or physical confrontation.

In our learning community, our understanding of respect is true to its meaning, it is held in the highest honour. Our resources are distributed fairly, there is no favouritism in our delivery, we value reflection above injustice, and an expectation is shared between all staff and our pupils regarding respect.

We can do better because we know better than to repeat hate.

Best wishes,  
Miss Shepherd (lady in the office)

Year 3 visited The Royal Pavilion this week. They got to see for themselves the Regency grandeur with Indian architecture and 19th Century Chinese inspired interiors. Here is a collection of photos from their historical trip...

# Year 3 Pavilion trip

Photo Album



A kind and inclusive learning community for all!

# Year 3 Pavilion trip

Photo Album



Year 3 had a fantastic visit to the pavilion this week. So did all the adults too! Year 3 took part in a special dragon hunt, where their challenge was to find as many dragons as they could find in the palace. Year 3 also did some sketching in the music room of the palace of their favourite mythical creatures.

We hope you enjoy our photo album!

A kind and inclusive learning community for all!

# Year 6 Tree Planting Trip



Queen's Park School's tree planting project is still going strong! This year, some of the year 6 children went to Longhill School to plant our trees. The saplings were originally planted from seed in pots by our children 2 years ago. Despite appalling weather, the children dug holes, banged in stakes and planted a total of 31 trees. They showed great resilience and determination to complete their task and should be very proud of themselves.



A kind and inclusive learning community for all!

# Year 6 PGL Windmill Trip

LET'S GO

ADVENTURE

Last week, 30 children from year 6 spent a week's residential at the PGL activity centre in Windmill Hill. What an incredible week it was! They spent four nights and five days at the site and experienced an amazing range of activities. Some of the highlights included: climbing, abseiling, Jacob's ladder (a giant ladder to climb), the giant swing, trapeze, zip wire, orienteering, fencing, archery and rifle shooting. All of the children pushed themselves out of their comfort zones and showed incredible resilience throughout the week. They also participated in bush-craft survival skills, problem-solving and a sensory trail, in which they had to demonstrate communication and teamwork skills. In the evenings, the children entertained themselves at a silent disco and played games in the giant sports hall. All the staff were so pleased to see the children involved and engaged all week and judging by the silence of the last night, they were all exhausted!



Adventure



A kind and inclusive learning community for all!

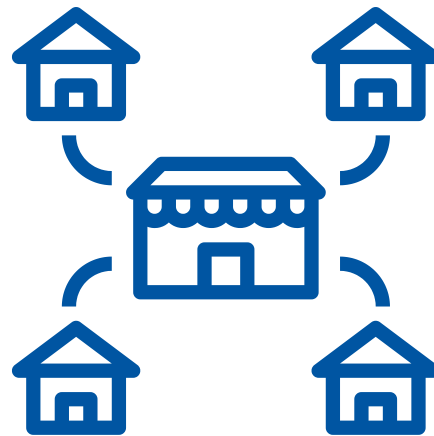
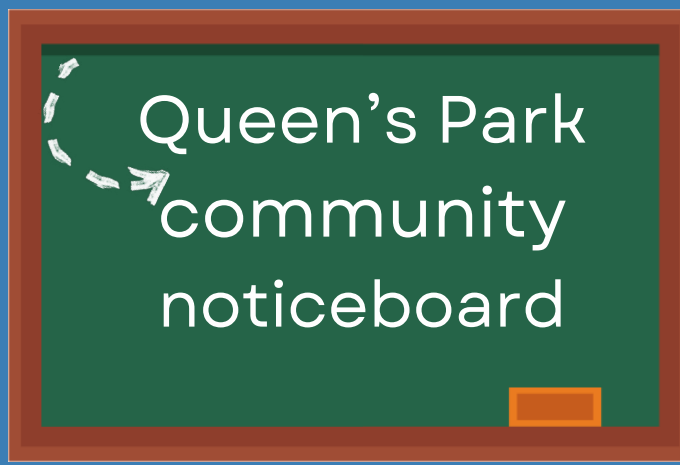


# Year 6 Activities

Last week, 24 stayed at school while the rest of Year 6 went on the residential. We had a fantastic week! We had a creative day where the children cooked cup cakes and made slime. They made an origami dragon's head and had fun designing and making key rings. On our science day, the children made a balloon rocket and tested how far it could travel. They also designed and made a lighthouse using an electrical circuit. We planted trees at Longhill School in the pouring rain but the children had an amazing time! In the park, the children participated in an orienteering treasure hunt. The week culminated in a bowling trip to Brighton Marina where some children scored a strike! The children were fantastic role models and ambassadors of Queens Park School.



A kind and inclusive learning community for all!



### One Step Closer to Revealing our New House Names

As you know, we are going to be introducing a house system in the Summer Term at Queen's Park.

From May, Houses will have a weekly meeting where the children will hand in House points, plan fundraisers and participate in House activities and competitions. They will also have the opportunity to voice suggestions for our school's next steps.

We held a competition to name the houses. Thank you for all those that entered, we had lots of entries. Staff have looked at the entries and one theme really stood out for us. We will be using that theme as a basis for our names.



The winning theme was sent in by...

Grace, Harper and family! Well done them!

Their theme was 'inspirational people'.

As an art lead school, staff felt that our house names, inspired by 'inspirational people', could be inspirational modern-day artists. We will be compiling a list of amazing people from the arts and will be inviting all the children who entered the competition to decide the final 4 names.

A kind and inclusive learning community for all!





# Reminder



Please may you clearly label your children's belongings. Unfortunately, we cannot find their rightful owners if they do not have names inside or on them.



## DONATION

Please could you make up a flyer for us to ask parents for donations of the following items for Reception:

- small toy vehicles in good condition
- puzzles and games in good condition and complete
- welly boots in good condition (sizes suitable for 4-5 year olds)
- wooden logs, no sharp bits, for our mud kitchen area
- plastic plates and bowls in good condition
- small pots of planting



A kind and inclusive learning community for all!

Queen's Park  
community  
noticeboard

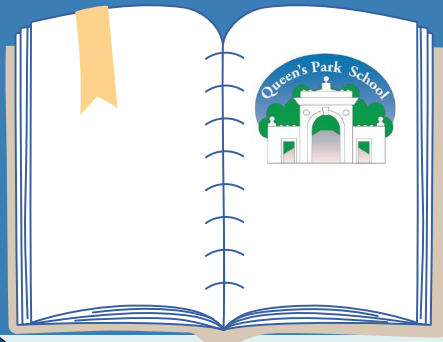


**SAMA KARATE**  
AFTER SCHOOL CLUBS  
SPACES AVAILABLE  
*Book Now!*  
**SAMAGROUP.CO.UK**  
CLICK 'JOIN A CLASS'

**HOVE LAGOON SKATE CLUB**  
*level Skate School*  
Every Sunday  
Beginners 10 - 11am  
Improvers 11 - 12pm  
£10.00 per person  
Ages 5 - 11 Years  
To book please scan the QR code

Please use Arbor to check for clubs we now have available at Queen's Park:  
art, dance, football, skateboarding, singing, and Sussex Cricket Club.

**BRIGHTON SKATE CLUB**  
Beginners Skateboarding Lessons  
Every Saturday @ St Peters  
10 - 11am  
£10 PP  
Age 5+



# Dates for your Diary



01273 686822

@ admin@queenspark.brighton-hove.sch.uk

Our opening hours are  
8.30am to 3.45pm.

4/3/2024 3:00 PM - 5:00 PM Boys Football Cup match  
@Benfield Primary School

5/3/2024 1:15 PM - 1:45 PM Reception Meet the Rabbit!

5/3/2024 1:45 PM - 2:45 PM Beetles swimming lessons

7/3/2024 (All day) World Book Day

7/3/2024 2:30 PM - 3:00 PM Year 2 Group Assembly

8/3/2024 1:15 PM - 2:45 PM Reception Visit to Jubilee Library

8/3/2024 3:30 PM - 4:45 PM QPSA Queen's Park School Bounce Party - Reception, Year 1 & 2

12/3/2024 1:45 PM - 2:45 PM Beetles swimming lessons

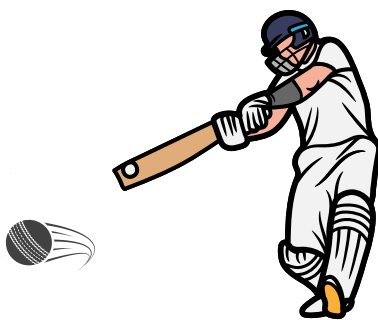
12/3/2024 3:30 PM - 6:00 PM Parents Evening 3, QPSA Cafe

14/3/2024 3:30 PM - 6:00 PM Parents Evening 4, QPSA Cafe

## On this day..

1ST MARCH 1839

Sussex County Cricket Club was made an official club on this day  
The club remain the oldest cricket club in England.



Remember our coffee mornings are for our Queens Park community.  
Everyone is welcome..and it is free! Coffee mornings are a safe space for parents / carers to get to know each other, voice their opinions, concerns or ideas.

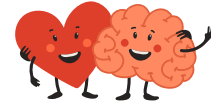
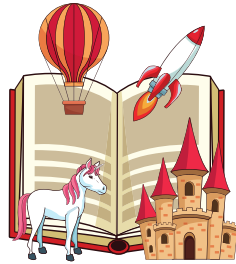
A kind and inclusive learning community for all!

# Queen's Park

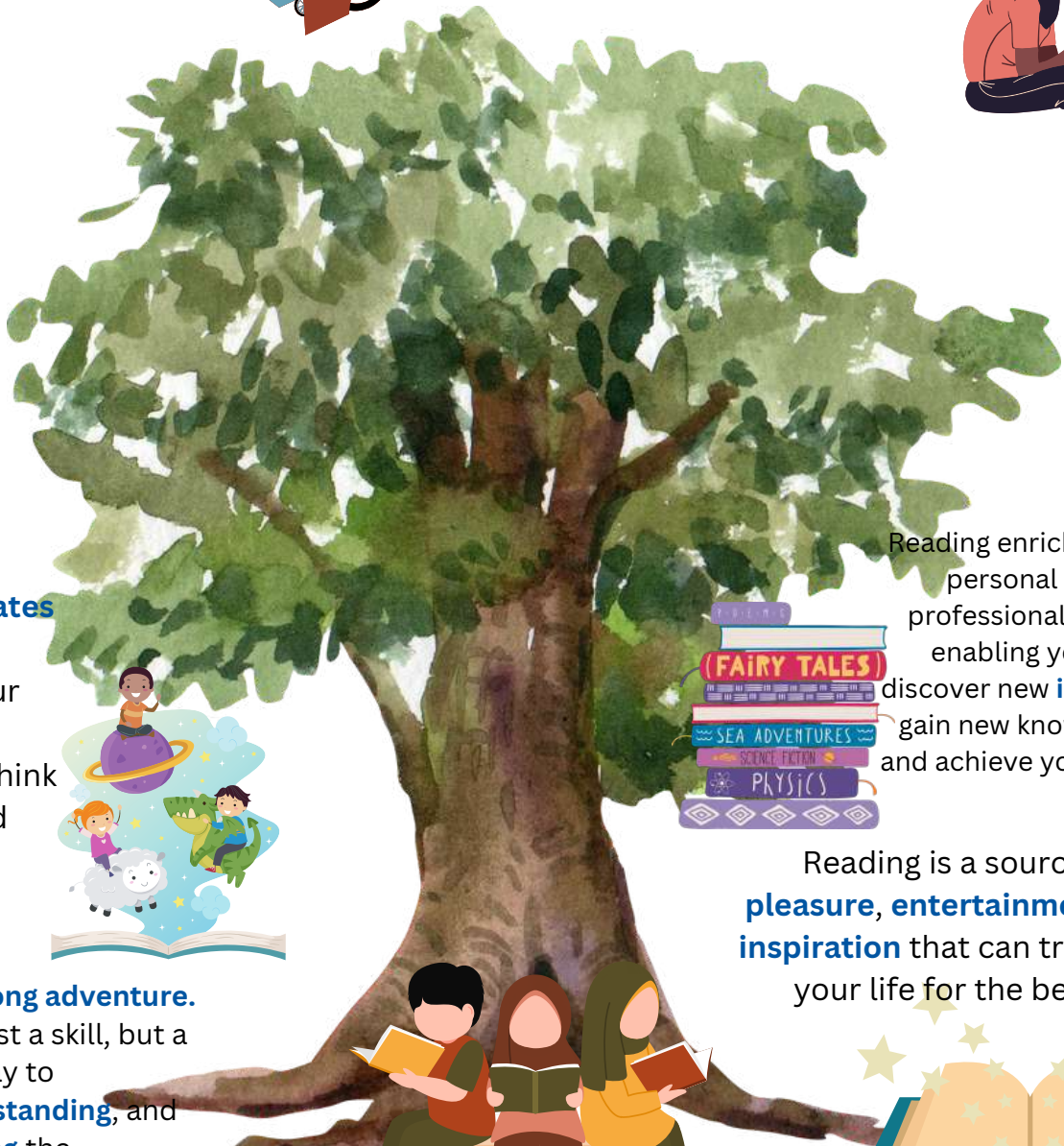
# Reading Tree



Reading exposes you to a wide range of **vocabulary**, which enhances your **communication** and **comprehension** skills.



Reading **helps** you develop **empathy**, **social skills**, and **leadership** qualities by exposing you to different perspectives and characters.



Reading **stimulates** your brain, **improves** your memory, and **helps** you think critically and creatively.



**Reading is a lifelong adventure.**

Reading is not just a skill, but a gateway to **learning**, **understanding**, and **exploring** the world of words and ideas.



Reading enriches your personal and professional life by enabling you to discover new **interests**, gain new knowledge, and achieve your goals.



Reading is a source of **pleasure**, **entertainment**, and **inspiration** that can transform your life for the better.



**A kind and inclusive learning community for all!**



## Book Week 4<sup>th</sup>-8th March 2024



Dear Parent/Carers

The theme of this year`s book week is **Read Your Way**. How, what and where do you like to read?

These are some of the activities planned for Book Week at Queen's Park Primary School.

- A class trip to the Jubilee Library and school library
- Shared reading with a class in a different year group
  - Opportunities to drop everything and read, children bring in their favourite reads, books, comics, magazines.
- Book swap on Friday 8th March

On Thursday 7th March, world book day, children may dress up in a costume which reflects their favourite fiction or non-fiction book. We encourage home-made costumes using recycled materials. If children prefer, they may make masks or hats in school. Prizes will be awarded for the most creative and innovative use of materials.

Thank you very much and happy reading

**Where do you like to read?**



We would love you to send in photos of your child/family's favourite place to read. Please email the school office and we will share them on our school's social media platforms.

# Awards!

*Congratulations to this weeks*

## STARS OF THE WEEK

Reception - Leen, Callum, Sevda, Zenaya

Year 1 - Logan, Rudi, Karim, Maffaq

Year 2 - Sibel, Arjun, Mimi

Year 3 - Amy, Raviraj, Eliot, Michelle

Year 4 - Raya-Mei, Amelia, Layla, Laurel

Year 5 - Jayden, Husna, Autumn, Grace

Year 6 - Leighton, Arian

you are  
**A STAR**

## Hot Chocolate



FRIDAY

*Well done for Good*

# ATTENDANCE



ATTENDANCE FRED HAS  
BEEN AWARDED TO

# Praying Mantis

*Well done Hot Chocolaters!*

MAISE, LUCY, AISHA  
JASPER, BERYL, RAPHAEL,  
LUCAS, OTTO, ZAID,  
LAYLA, DANIEL AND DANI

A kind and inclusive learning community for all!





**For your**

# Acts of kindness



Well done to Reception and years 3, 4, and 6 for working hard towards winning Attendance Freddy. You have done so well this term so far, keep it up!



Thank you to our Queen's Park families for your patience and understanding as we ironing out the teething troubles with Arbor. Queen's Park office appreciates you!



Well done to all our year 6's who went away (some for the first time) to stay at PGL Windmill Hill.

We have heard all your stories and think you did a great job trying new things! A special thank you to all our Queen's Park staff who went along. Year 6 and Queen's Park appreciate your time and support!



Well done to our Queen's Park children for their collective efforts on earning your marbles. Queen's Park think you're doing great!

A kind and inclusive learning community for all!

# POSITIVE LEARNING AFFIRMATION!



A kind and inclusive learning community for all!



# Brighton Skate Scheme

FREE SKATEBOARD LESSONS FOR REFUGEES AND ASYLUM SEEKERS



3rd January to 7th February AND 21st February to 27th March

Every Wednesday from 6:45 to 7:45 | All equipment provided

Loxdale English Centre, Locks Hill, Portslade, BN41 ZLA

To find out more go to [linktr.ee/BHSA.Brighton](https://linktr.ee/BHSA.Brighton) or scan the QR code below



Some of you may have heard about **Early Help** ...we thought it would be helpful to explain a little bit about them...

### What is Early Help?

Early Help is support offered to families experiencing a range of issues.

It brings together appropriate professionals who will work with the whole family to try to make things improve for everyone because often, when one person in a family has a challenge, it will affect other people in the family too.

The support offered might be about parenting challenges, employment issues, attendance issues, financial challenges, challenging behaviour or emotional well being to name a few. Whatever problem you might be experiencing some Early Help might help support your family.

If school, or another professional working with you, suggests you might benefit from Early Help they will ask your permission to make a referral. You can also refer yourself for help on this link here.

<https://www.brighton-hove.gov.uk/families-children-and-learning/refer-child-or-family-front-door-families>

Early help services are aimed at supporting children and families without a social worker.

Once the referral is made there is usually a wait to find out if you will receive some support. Once a worker has been allocated they will talk with you – and more importantly listen to you – to find out about the difficulties that you and your family are having.

They will also want to know about what is going well for your family and any strengths that you have that can be built upon. The worker will ask about the extra support that you think you might need and advise you on what is available. Once they have advised you on what support can be offered you will be able to benefit from different professionals help.

This support can last 12 weeks or be extended if there is more work to be done. It is usually coordinated by a Family Hub Worker who are based at the 4 new Family Hub centres across Brighton.

You and your family are at the centre of this supportive process with the aim being to address whatever challenges you are facing quickly so that they don't get too big.



## What are Family Hubs?

Family Hubs provide families with a single access point to combined family support services for early help with a variety of support.

They can help children from conception to 19 years old (25 with SEND)

Family Hub locations and contact details

You can find the main Family Hubs at the following locations:

**Turner Family Hub - Ivory Place, Brighton, BN2 9QE**

**Whitehawk Family Hub - 178 Whitehawk Rd, Whitehawk, Brighton, BN2 5FL**

**Moulsecoomb Family Hub - Hodshrove Lane, Moulsecoomb, Brighton, BN2 4SE**

**Hangleton Family Hub - Harmsworth Crescent, Hangleton, Hove, BN3 8BW**

How to contact the Family Hubs

phone **01273 293 545**

send an email to **[familyhubs@brighton-hove.gov.uk](mailto:familyhubs@brighton-hove.gov.uk)**

If you have any questions please come and ask the Queens Park Team



# Miss School Miss Out

## Did you know?



**29,000**  
pupils

In Brighton & Hove we have 29,000 pupils in our schools

**190**

There are 190 school days in each academic year

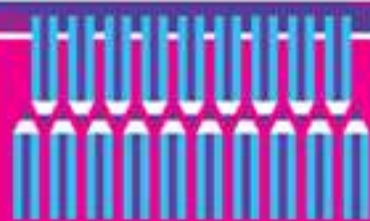


**15** = **2 weeks**

If you're 15 minutes late every day you lose two weeks of learning by the end of the school year



Two school days missed each month during your school life adds up to one whole year of school lost



90% attendance may look impressive but it means missing 19 days of education a year



**4** ..... **5**

Our data shows pupils with more than 95% attendance achieve GCSE results at least one grade higher



It's the law! Parents and carers can be fined and even sent to prison if children do not attend school\*



You can go to school with nits, conjunctivitis or a headache. Find out more: [www.brighton-hove.gov.uk/sicknessguidance](http://www.brighton-hove.gov.uk/sicknessguidance)



When you're older, colleges and employers can ask to see your school attendance record



If you don't want to go to school, tell someone what's wrong so you can get the help and support you need



Every school has someone to help you build your confidence to come to school and help tackle any concerns



Brighton & Hove  
City Council



# Free Swimming

Now available for 18 year olds and under

King Alfred Leisure Centre  
Prince Regent Swimming Complex  
St Luke's Swimming Pool

Call **0845 803 5519**

Visit [www.freedom-leisure.co.uk/freeswimmingBH](http://www.freedom-leisure.co.uk/freeswimmingBH)



In partnership with  
**freedomleisure**  
where you matter





# Free Swimming

Now available for 18 year olds and under

King Alfred Leisure Centre  
Prince Regent Swimming Complex  
St Luke's Swimming Pool

Call **0845 803 5519**

Visit [www.freedom-leisure.co.uk/freeswimmingBH](http://www.freedom-leisure.co.uk/freeswimmingBH)



In partnership with  
**freedomleisure**  
where you matter

