



# Newsletter

Spring Term - January 2024



## A Message from the Head

Happy Friday to our Queen's Park Families.

We have had another brilliant week in school. We have seen the start of some of our new clubs this week with lots more starting next week. Children were squealing with delight on their way to karate which was so lovely to hear. I hope the rest of their clubs bring them similar levels of joy.

We also have lots going on inside school and have been busy building and strengthening connections with lots of Brighton and Hove organisations and schools including Albion in the community, Vardean school and Sussex Maths hub who have all been in working with us over the last week. We have started important work on our whole school curriculum to ensure children have the very best offer in all subject areas and staff are working hard to ensure the curriculum offer is irresistible to our children.

All very exciting improvements which we cannot wait to see taking shape.

Wishing you all a wonderful weekend - stay warm!

*Mrs. E. Gale*

# Year 2 News



In Year 2, we have been learning all about The Great Fire of London. In pairs, we made Tudor houses out of cardboard boxes, black and white paper and masking tape.

We then lined up the houses to re-create Pudding Lane. As you can see the houses were very close together – this is one of the reasons the fire spread so quickly.

The fire started in Thomas Farriner's bakery and before long, the whole of London got caught in the flames.

We watched from a safe distance away but it was a very exciting and memorable event!



A kind and inclusive learning community for all!



# What's happening in Music



At the end of last term, the whole school was filled with music and singing!

The choir (with children from year 4, 5 and 6) had a very busy December, beginning with the ever brilliant One Voice Festival of Singing with Create Music at the Brighton Centre. They joined many other schools from all around Sussex to sing Christmas songs and kick off the festive cheer. It is a wonderful opportunity for them all to perform in a great venue for family and friends and is always such a joy!



The choir also sang so beautifully for the residents of Patching Lodge and Leach Court, on Park Street. We have been singing Christmas songs for the residents here for many years and it is always a real treat for us to entertain the wider community. We all have such a great time and there are often a few tears shed when we sing 'Love Shone Down'!



A kind and inclusive learning community for all!



# What's happening in Music



At another December performance, the choir made an appearance at the Winter Fair and sang their hearts out to entertain the crowds!



But it wasn't only our choir singing, as an end of term celebration, children in years 1-6 performed in a Festive Singing Concert outside for family and friends which was a roaring success and Reception children entertained everyone in the Hall. The whole school got the chance to show how hard they had been working in December to learn and rehearse all the songs. The weather held out for the outdoor concert and the singing was as completely beautiful and as moving as always! Well done to all QP singers across the entire school!



Lots more singing continues after this new term and watch out for the new afterschool Singing Club run by Ms Parry for years 4, 5 and 6 on Thursdays. Ms Parry is wonderful singer songwriter and the club will be brilliant. I think I may well go myself!

Special thanks to our lovely Ukrainian Choir.

A kind and inclusive learning community for all!

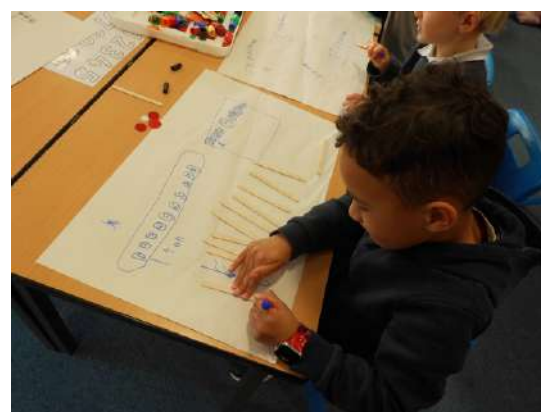
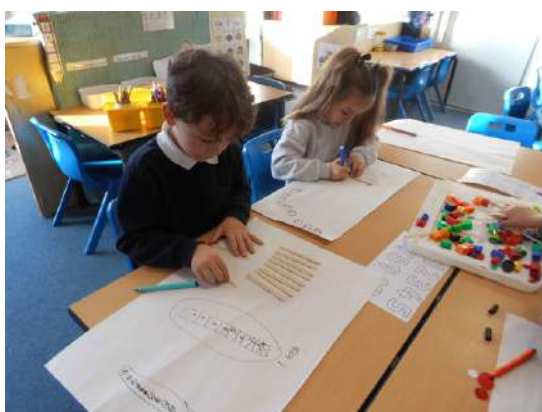
What is happening in...

Maths.



EYFS, KS1 and year 3 classes have been really enjoying the introduction to the Mastering Number Project this year. This project aims to secure firm foundations in the development of good number sense for all children to support further success in maths. The lessons are really practical and are in addition to their daily maths lessons.

We have invested in new resources to support the children's learning across the school. Here is an example from year 1 where they have been exploring 'making ten' in different ways using counters, unifix and lolly sticks.



How the children feel about maths at Queen's Park -

"I feel excited"

"It's my favourite subject"

"Feels good when you understand it"



#### Numeracy top tips:

- \*Always be positive about maths with your children. Maths is fun!
- \*Encourage your children to keep trying their best and stay confident.
- \*Look for maths in everyday life, for example when you go the shops, help your child find the total value of your shop.

A kind and inclusive learning community for all!



Did you know that Brighton and Hove City Council offers a range of free parenting workshops. These are online and quick and easy to sign up to and the course dates are regularly updated. Links to book are on their webpage: Triple P parenting workshops ([brighton-hove.gov.uk](https://brighton-hove.gov.uk))

The next courses available are:

Workshops for parents of children under 10 years old

The Power of Positive Parenting: tips for parents of children under 10

This workshop will give you practical tips on creating a positive relationship with your child and help you deal with challenges when they come up.

Book a place on the following dates:

16 January 2024, 12 midday to 2pm

19 March 2024, 12 midday to 2pm

For those of you with older children, they are also offering:

Workshops for parents of teenagers

Coping with teenagers' emotions

This 2-hour workshop will look at some of the reasons teenagers can become emotional and gives some practical suggestions to help you.

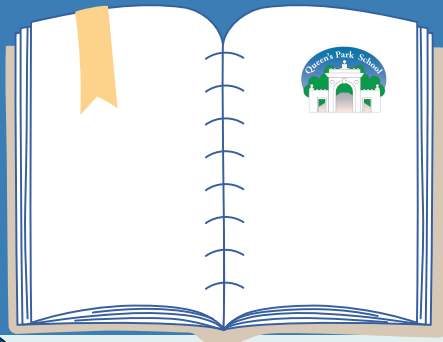
Book a place on the following dates:

18 January 2024, 12 midday to 2pm

19 March 2024, 12 midday to 2pm

Please let us know if you would like any support to book onto these course.

A kind and inclusive learning community for all!



# Dates for your Diary



01273 686822

@ admin@queenspark.brighton-hove.sch.uk

Our opening hours are  
8.30am to 3.45pm.

## On this day..

11TH JANUARY 1851

The first telegraphic message (where the sender uses symbolic codes, known to the recipient, rather than a physical exchange of an object bearing the message) was sent from Brighton to London by the Electric and International Telegraph Company from Brighton Station. By 1880 there were 11 telegraph offices in Brighton and nearly half a million messages were handled.



16/1/2024 8:30am Coffee at the gate- Maths

16/1/2024 1:45pm - 2:45pm Hornets

Swimming lesson

17/1/2024 3:30 PM - 5:30 PM Boys Football

Fixture vs Carden @ Manor Rd

18/1/24 All day Census Day

23/1/24 1:45pm - 2:45pm Hornets swimming  
lesson

23/1/2024 2:30 PM - 5:00 PM QC Girls

Football Fixture @ Carden School

24/1/24-25/1/24 All day NHS Screening

Team in for Reception Classes

### KEEP THE DATES!

12/03/2024 Parent's Evening 1

14/03/2024 Parent's Evening 2



Remember our coffee mornings are for our  
Queens Park community.

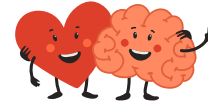
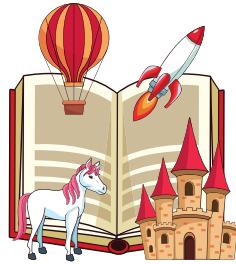
Everyone is welcome..and it is free! Coffee  
mornings are a safe space for parents /  
carers to get to know each other, voice  
their opinions, concerns or ideas.

A kind and inclusive learning community for all!

# Queen's Park Reading Tree



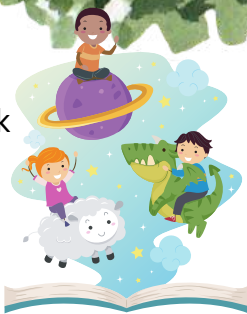
Reading exposes you to a wide range of **vocabulary**, which enhances your **communication** and **comprehension** skills.



Reading **helps** you develop **empathy**, **social skills**, and **leadership** qualities by exposing you to different perspectives and characters.



Reading **stimulates** your brain, **improves** your memory, and **helps** you think critically and creatively.



Reading is a **lifelong adventure**. Reading is not just a skill, but a gateway to **learning**, **understanding**, and **exploring** the world of words and ideas.



Reading enriches your personal and professional life by enabling you to discover new **interests**, gain new knowledge, and achieve your goals.



Reading is a source of **pleasure**, **entertainment**, and **inspiration** that can transform your life for the better.



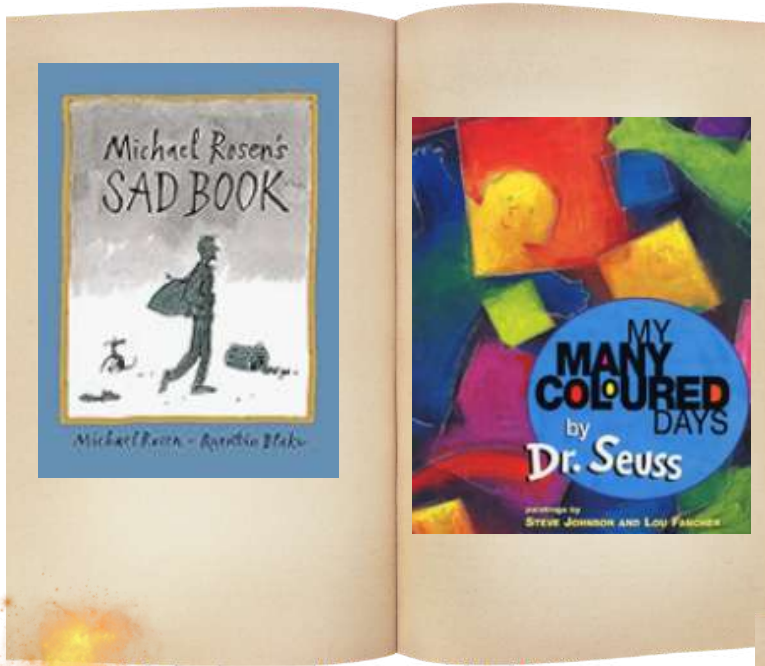
**A kind and inclusive learning community for all!**





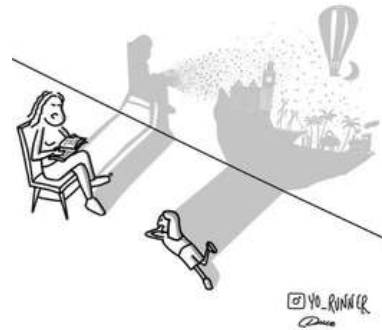
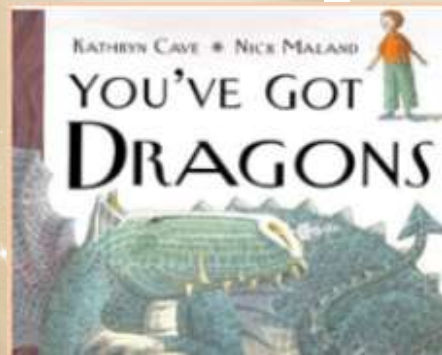
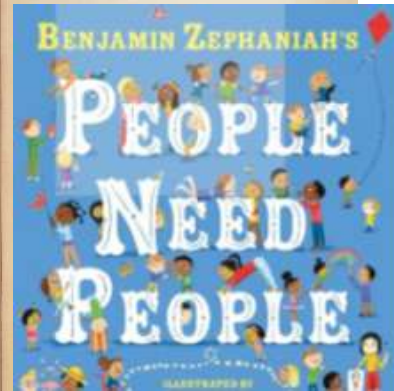
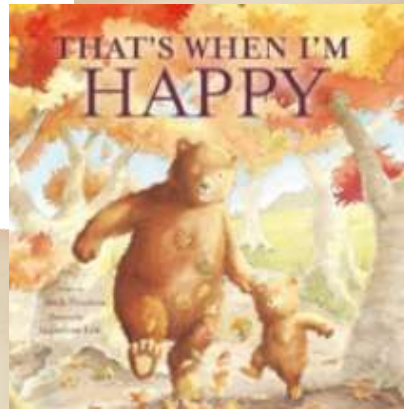
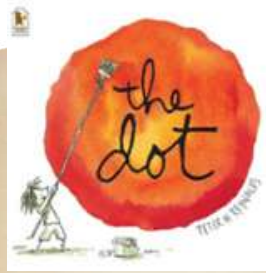


# Queen's Park Reading



Go on an adventure..

..try a new book!



A kind and inclusive learning community for all!



# Awards!

*Congratulations to this weeks*

## STARS OF THE WEEK

Reception - Arthur, Johanna, Freddie  
Year 1 - Hattie, Barley, Affaq, Zavier,  
Scarlett

Year 2 - Luca, Lottie, Jude U, Lei

Year 3 - Behrad, Grace

Year 4 - Amelia, Yamin, Beryl, Aisha, Mio

Year 5 - Adhil, Husna, Cassius, Rose

Year 6 - Jack, Lorenz, Arian, Harriet

you are  
**A STAR**

*Well done for Good*

# ATTENDANCE



ATTENDANCE FRED HAS  
BEEN AWARDED TO

# Beetles

*Well done Hot Chocolaters!*

BROOKLYN, MAX,  
ARTHUR, JORY,  
DARIA, RENAE,  
MARK, ELIZA,  
OZORA, AMELIA

# Hot Chocolate



# FRIDAY

A kind and inclusive learning community for all!





Thank you

**For your**

# Acts of kindness

We are blown away by Mrs. Bassett's efforts with our extra-curricular clubs offer. We are passionate about building a first class clubs list and it is Mrs. Bassett who has been communicating and organising her little socks off to get these all up and running. Thank you, Mrs. Bassett!



We would like to acknowledge and give thanks to all the children who visit our school office and use their manners. Whether they are completing tasks or are there to ask something. Your politeness is appreciated and has a positive impact on our visitors!



“ Thank you to all our staff at Queen's Park for coming together and making our return to school and the beginning of the new year enjoyable. Queen's Parks learning community appreciates your team work! ”



Well done to our Queen's Park children for collectively working towards their classroom marbles.

A kind and inclusive learning community for all!

Join in  
with our..

WINTER/SPRING TERM 2024  
**Encore Tennis Club**  
[Years 3 to 6]



Tennis club for children in years 3 to 6 will on Wednesdays after school at Queens Park Tennis Club, East Drive, BN2 0BQ [www.qptc.co.uk](http://www.qptc.co.uk) from 3:30-4:30pm.



The club is run by local LTA award winning coach (Queens Park Tennis Club) Jimmy Smith, a Level 3 LTA qualified with over 15 years' experience. These tennis sessions will be a great introduction to the game of tennis with fun filled activities and match play to help develop your child's coordination, balance, and fitness levels. I will run each end of term session as a fun competition to help the children develop their knowledge of scoring and match play. The children will have an opportunity to join our weekly tennis courses at Queens Park Tennis Club if they show a keen interest in the game.

Children will need to bring PE kits, water bottle and a tennis racket if they have one. Rackets can be provided. The club costs **£6 per week (£60 per term) per child** and is to be paid in full before they start.

The Tennis club will run for **10 weeks from Wednesday 17th January until Wednesday 27th March 2024** inclusive, excluding the February Half-Term (12th – 16th February). Your child will be walked after school by Jimmy to the tennis club, and you should collect your child from **Queens Park Tennis Club at 4:30pm.**

If you would like a place for your child, please contact Jimmy [jimmy@encoretennis.net](mailto:jimmy@encoretennis.net) and please email him to give consent for the walk from the school to the club. The course can be booked via this link <https://goteamup.com/p/7767495-encore-tennis/courses/95736/>



Places offered on a first come first serve basis.

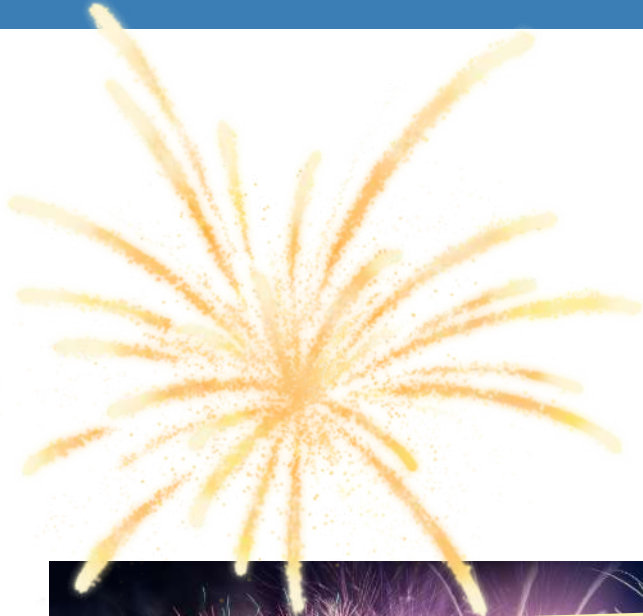
Many thanks Jimmy Smith.

\*Please inform Jimmy if your child will miss a club session for any reason\*  
Please ask if you wish to see our data privacy policy.

A kind and inclusive learning community for all!



# POSITIVE LEARNING AFFIRMATION!



**MY ASPIRATIONS FOR  
2024**

**ARE WITHIN MY  
REACH!**



A kind and inclusive learning community for all!



**KITES IN  
SOLIDARITY**

# **GLOBAL KITE FLIGHT**

**in SOLIDARITY with GAZA**

**On International Kite Day**

**SUN 14 JAN 2024**

Hove lawns near The Lawns Cafe, BN3 2FR

Parking @ King Alfred Car Park

**11am - 12.30pm**

---

 **TAG US : @KITESINSOLIDARITY  
#KITESINSOLIDARITY**

Follow us: @parentsforpalestinemidsussex and  
@dear\_children\_of\_palestine\_

# Brighton Skate Scheme

FREE SKATEBOARD LESSONS FOR REFUGEES AND ASYLUM SEEKERS



3rd January to 7th February AND 21st February to 27th March

Every Wednesday from 6:45 to 7:45 | All equipment provided

Loxdale English Centre, Locks Hill, Portslade, BN41 ZLA

To find out more go to [linktr.ee/BHSA.Brighton](https://linktr.ee/BHSA.Brighton) or scan the QR code below



Some of you may have heard about **Early Help** ...we thought it would be helpful to explain a little bit about them...

### What is Early Help?

Early Help is support offered to families experiencing a range of issues.

It brings together appropriate professionals who will work with the whole family to try to make things improve for everyone because often, when one person in a family has a challenge, it will affect other people in the family too.

The support offered might be about parenting challenges, employment issues, attendance issues, financial challenges, challenging behaviour or emotional well being to name a few. Whatever problem you might be experiencing some Early Help might help support your family.

If school, or another professional working with you, suggests you might benefit from Early Help they will ask your permission to make a referral. You can also refer yourself for help on this link here.

<https://www.brighton-hove.gov.uk/families-children-and-learning/refer-child-or-family-front-door-families>

Early help services are aimed at supporting children and families without a social worker.

Once the referral is made there is usually a wait to find out if you will receive some support. Once a worker has been allocated they will talk with you – and more importantly listen to you – to find out about the difficulties that you and your family are having.

They will also want to know about what is going well for your family and any strengths that you have that can be built upon. The worker will ask about the extra support that you think you might need and advise you on what is available. Once they have advised you on what support can be offered you will be able to benefit from different professionals help.

This support can last 12 weeks or be extended if there is more work to be done. It is usually coordinated by a Family Hub Worker who are based at the 4 new Family Hub centres across Brighton.

You and your family are at the centre of this supportive process with the aim being to address whatever challenges you are facing quickly so that they don't get too big.





## What are Family Hubs?

Family Hubs provide families with a single access point to combined family support services for early help with a variety of support.

They can help children from conception to 19 years old (25 with SEND)

Family Hub locations and contact details

You can find the main Family Hubs at the following locations:

**Turner Family Hub - Ivory Place, Brighton, BN2 9QE**

**Whitehawk Family Hub - 178 Whitehawk Rd, Whitehawk, Brighton, BN2 5FL**

**Moulsecoomb Family Hub - Hodshrove Lane, Moulsecoomb, Brighton, BN2 4SE**

**Hangleton Family Hub - Harmsworth Crescent, Hangleton, Hove, BN3 8BW**

How to contact the Family Hubs

phone **01273 293 545**

send an email to **[familyhubs@brighton-hove.gov.uk](mailto:familyhubs@brighton-hove.gov.uk)**

If you have any questions please come and ask the Queens Park Team



# Miss School Miss Out

## Did you know?



**29,000**  
pupils

In Brighton & Hove we have 29,000 pupils in our schools

**190**

There are 190 school days in each academic year

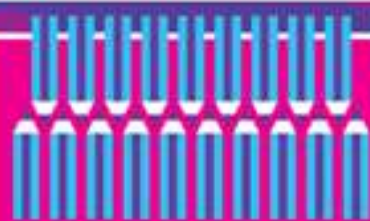


**15** = **2 weeks**

If you're 15 minutes late every day you lose two weeks of learning by the end of the school year



Two school days missed each month during your school life adds up to one whole year of school lost



90% attendance may look impressive but it means missing 19 days of education a year



**4** ..... **5**

Our data shows pupils with more than 95% attendance achieve GCSE results at least one grade higher



It's the law! Parents and carers can be fined and even sent to prison if children do not attend school\*



You can go to school with nits, conjunctivitis or a headache. Find out more: [www.brighton-hove.gov.uk/sicknessguidance](http://www.brighton-hove.gov.uk/sicknessguidance)



When you're older, colleges and employers can ask to see your school attendance record



If you don't want to go to school, tell someone what's wrong so you can get the help and support you need



Every school has someone to help you build your confidence to come to school and help tackle any concerns



Brighton & Hove  
City Council



# Free Swimming

Now available for 18 year olds and under

King Alfred Leisure Centre  
Prince Regent Swimming Complex  
St Luke's Swimming Pool

Call **0845 803 5519**

Visit **[www.freedom-leisure.co.uk/freeswimmingBH](http://www.freedom-leisure.co.uk/freeswimmingBH)**



In partnership with  
**freedomleisure**  
where you matter





# Free Swimming

Now available for 18 year olds and under

King Alfred Leisure Centre  
Prince Regent Swimming Complex  
St Luke's Swimming Pool

Call **0845 803 5519**

Visit [www.freedom-leisure.co.uk/freeswimmingBH](http://www.freedom-leisure.co.uk/freeswimmingBH)



In partnership with  
**freedomleisure**  
where you matter



**Brighton & Hove**  
City Council